



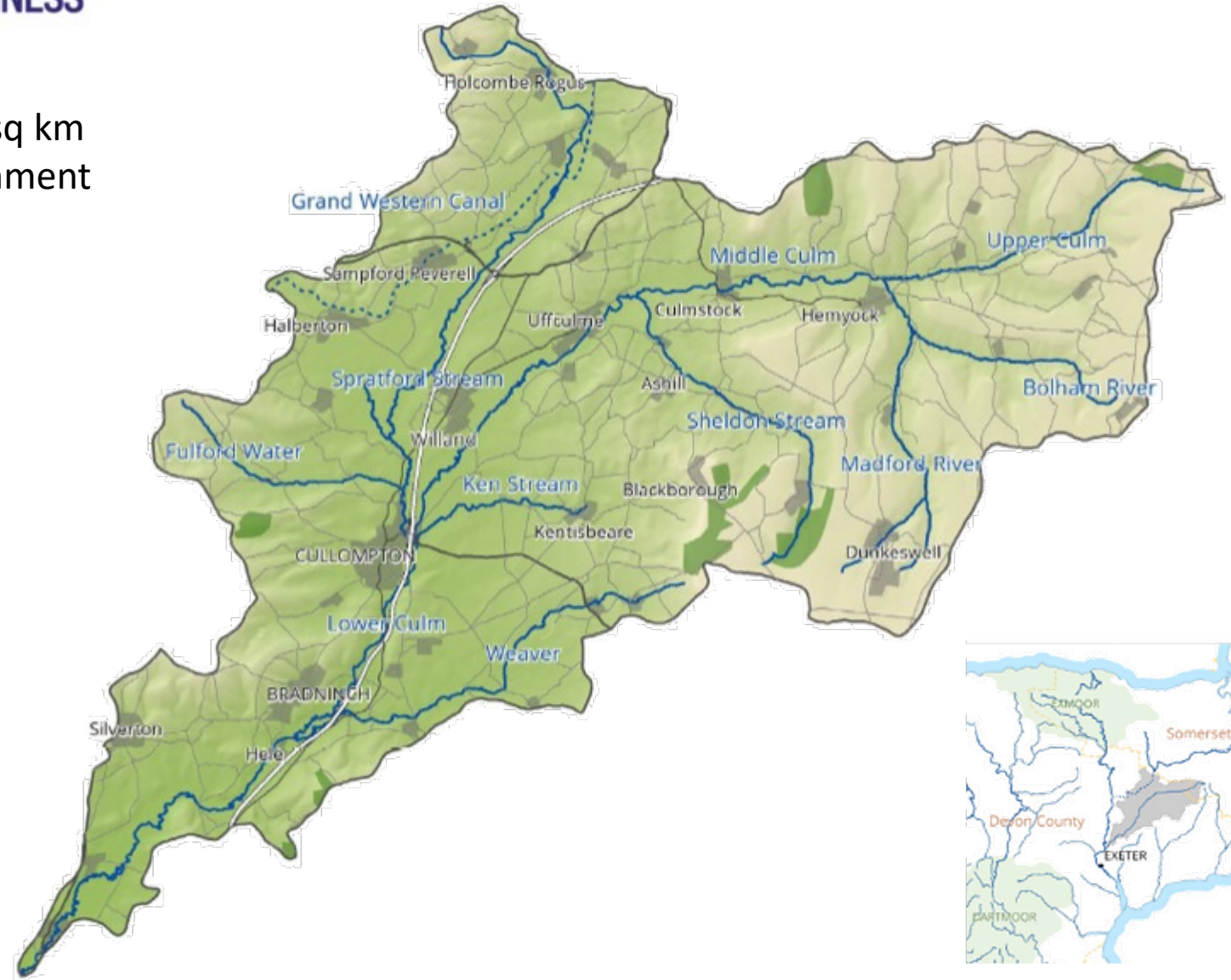
Connecting the Culm

**Forum #6- Cullompton Community
Centre- 14 March 2024**

Nature Recovery

Connecting the Culm

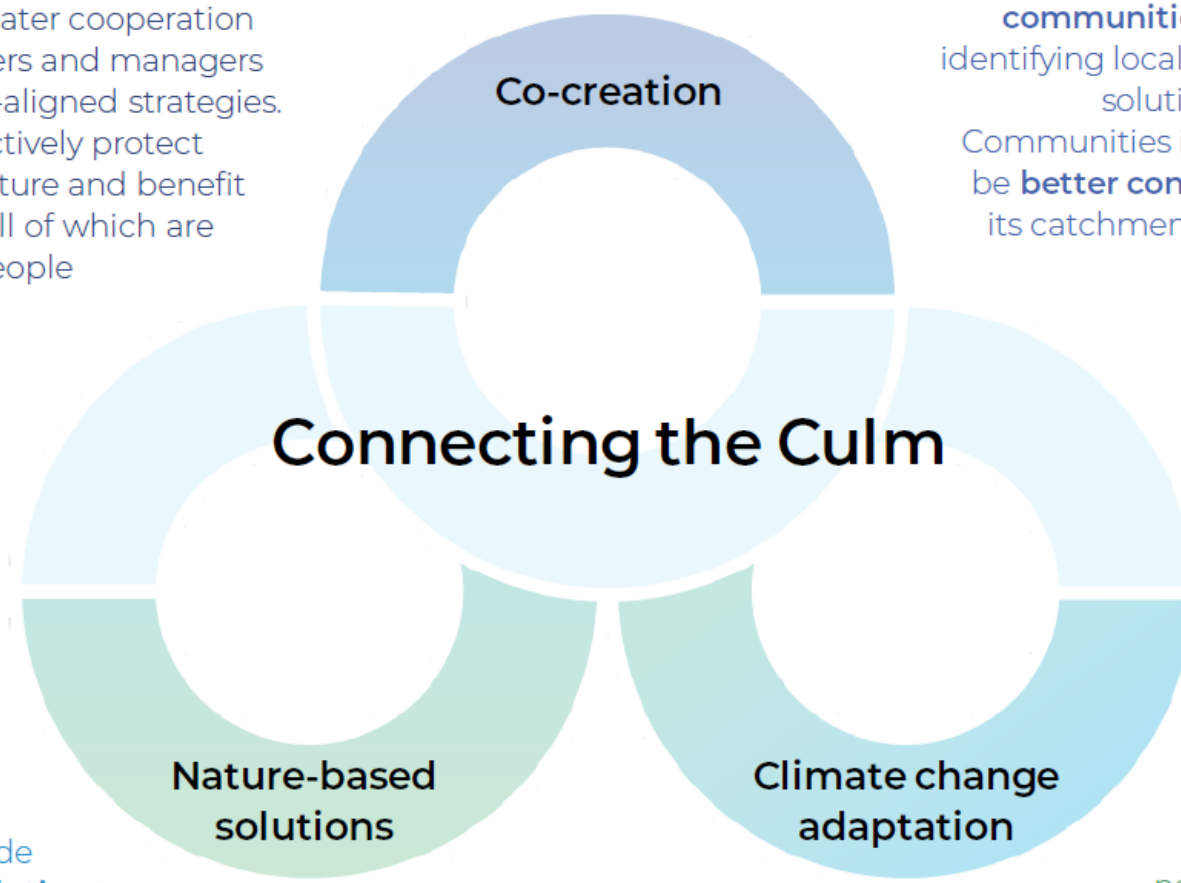
300 sq km catchment



connectingtheculm.com



Strategic planning on a catchment scale allows for greater cooperation between landowners and managers to implement well-aligned strategies. This will more effectively protect property, infrastructure and benefit the environment, all of which are valuable to local people and the economy.



A Co-Creation approach **empowers communities** to take ownership in identifying local issues, and developing solutions to overcome them. Communities involved in this way will be **better connected** to the river and its catchment, and will deliver more **resilient solutions**.

Nature-based solutions can provide a **cost-effective solution** to tackle catchment-wide issues, by restoring and **emulating natural catchment functions** as well as providing a range of **benefits to society**.

The Culm catchment needs to adapt to ensure **robust strategies** are implemented that address the current **climate emergency**.



Catchment Modelling & Localised Issues- infrastructure



- Calibrating against real rainfall and flood events
- Assessing climate change impacts
- Quantifying benefits of working with nature & upstream in catchment

Catchment Modelling & Localised Issues- property at risk



The Blueprint for the Culm – a 25-year plan

BLUEPRINT FOR THE CULM

A 25-YEAR VISION
FOR THE RIVER CULM
AND ITS CATCHMENT

Action Plan



FLOODING

Improve resilience to flooding so floodwaters don't threaten communities or damage homes, businesses and critical transport infrastructure.



DROUGHT

Improve resilience to drought so water levels sustain wildlife and are sufficient for farming and business even during periods of drought.



WATER QUALITY

Reduce pollution entering the river from all sources so that the Culm's water quality is rated as High, it supports thriving habitats and wildlife populations and is a pleasure for people to experience.



WILDLIFE

Rebuild a landscape that is rich in wildlife by improving the management of existing wildlife sites and connecting them together by creating new or improved habitats.



CARBON

Whilst delivering actions to improve resilience, restore as much carbon as possible in soils and woody vegetation to help reduce greenhouse gases in the atmosphere.



ACCESS

Encourage and enable people of all backgrounds, ages and abilities to connect with the river so that they can enjoy it to its full. Provide evidence and information to support wider improvements to transport and access issues that relate to the river.



HERITAGE

Use an understanding of heritage to explore how people have lived with water in this valley through time, and to inform our actions for a resilient future. Protect and enhance key historic features in the landscape.



The Culm in 2022



The Culm in 2050

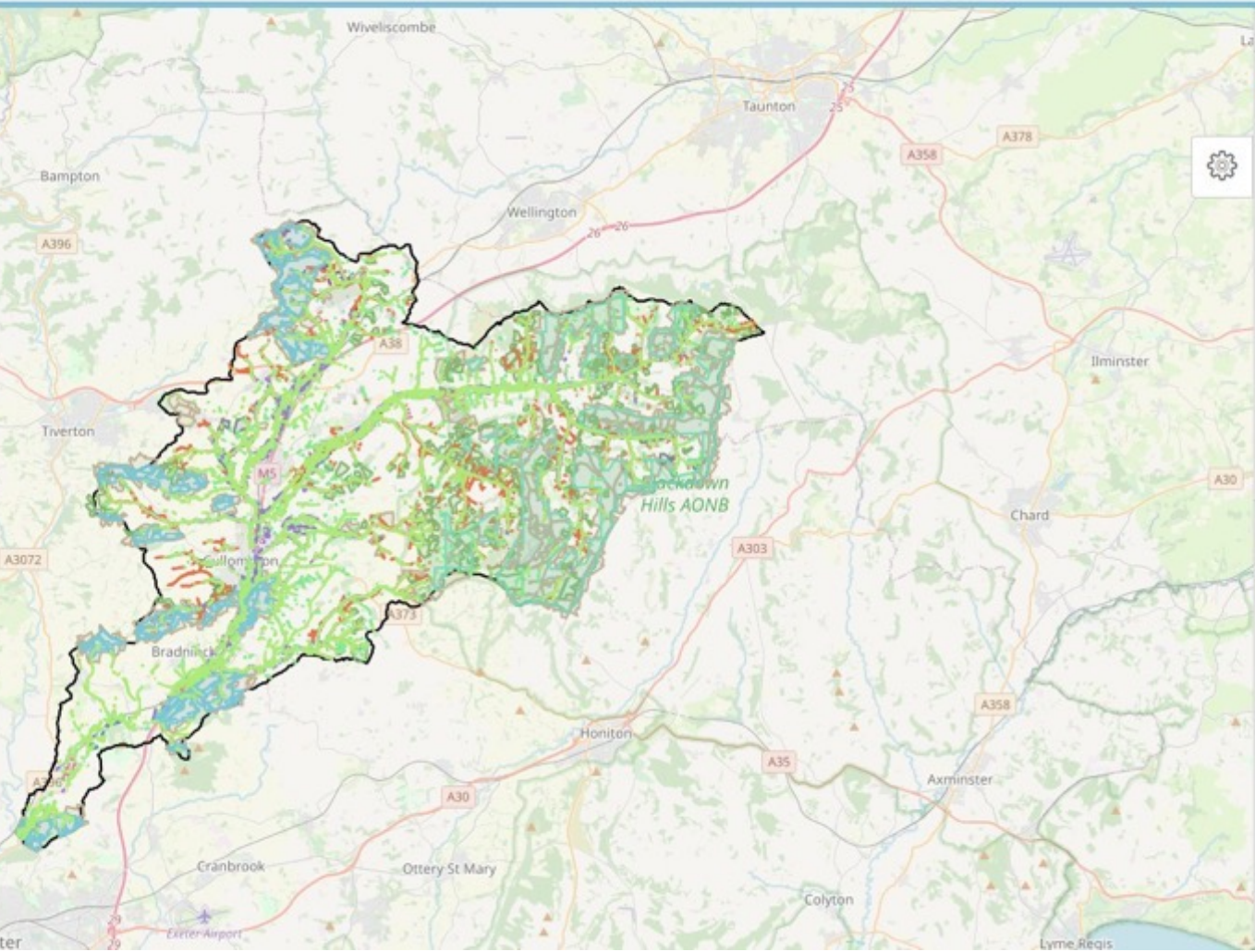


Whole catchment model

We commissioned JBA Consulting to develop a whole catchment model and identify where best to focus NFM measures.

Potential Areas for Improved Resilience (PAIRs)

- Temporary water storage / floodplain reconnection
- Improving soil infiltration
- Riparian tree planting / hedgerow reinstatement



Refined Potential Areas for Improved Resilience

Refined PAIRs

- Riparian Woodland
- Remeandering
- Leaky Barriers
- Inlets
- Hedgerows
- Floodplain Reconnection
- Floodplain Meadows
- Bunds
- Additional Storage from Excavation
- Wider Catchment Woodland
- Wet Woodland and Stage 0
- Swales
- Soil Improvements

Additional Potential Areas for Improved Resilience

Additional PAIRs

- Floodplain Reconnection
- Gully Blocking
- Hedgerow
- Large Woody Debris
- Leaky Dams
- Paleo-Reconnection
- Potential for Improved Soils, Infiltration and Wider Woodland
- Potential for Soil Decompaction on Clay Caps
- Riparian Woodland
- Run-off Attenuation

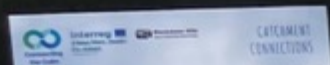




CATCHMENT CONNECTIONS

RIVER DIPPING

* ALL CHILDREN MUST BE *
SUPERVISED BY AN ADULT



Wash hands
after river
dipping





INVESTING IN THE LONG-TERM VISION FOR THE RIVER CULM

How partners and agencies are working together in the Culm catchment to tackle the area's problems and maximise the impact of their investments.

MID DEVON DISTRICT COUNCIL

The Culm Garden Village Masterplan is being developed and we remain closely involved to integrate catchment wide nature-based solutions to reduce flood risk and connect the development to neighbouring communities.

FORESTRY COMMISSION

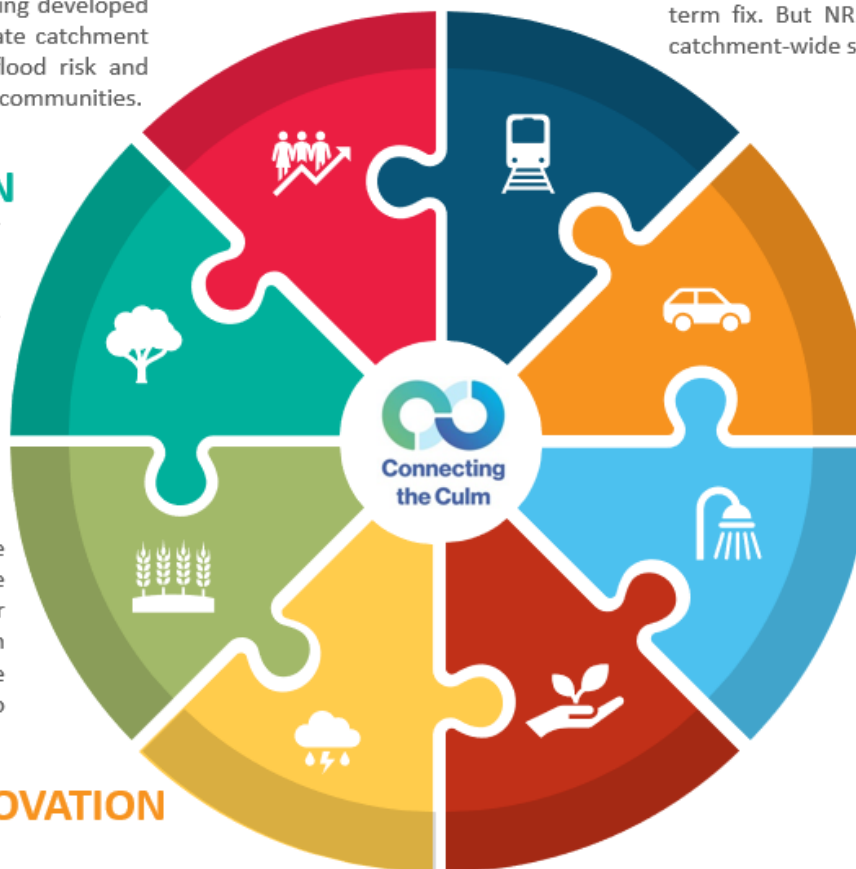
The England Woodland Creation Offer launched in 2021. It provides enhanced grants for tree planting and is more flexible than previous schemes. We're helping coordinate landowners to apply in targeted areas.

AGRI-ENVIRONMENT SCHEMES

New and revised support for sustainable land management is emerging all the time with a big emphasis on public money for public goods. We are working closely with agencies and land managers to make the most of these opportunities for the Culm, to achieve the Blueprint's goals.

DEVON RESILIENCE INNOVATION PROJECT

This programme, led by Devon County Council, is targeting micro-catchments that are susceptible to very rapid flooding. A project officer is joining the CTC team to work in 5 areas of the Culm and £600,000 is available over the next 5 years to invest in practical nature-based solutions.



NETWORK RAIL

Work to raise the bridge at Hele to reduce flood risk to the main Westcountry railway line is still going ahead as a short-term fix. But NR are committed to developing longer-term catchment-wide solutions and are exploring these with us.

NATIONAL HIGHWAYS

The M5 has an impact on water quality in the Culm and National Highways are keen to address this, as well as invest in the wider landscape around the M5, to help address the biodiversity and climate crises.

SOUTH WEST WATER

A key concern for SWW is to reduce the impact of flooding on sewers and sewage treatment works, because this makes spills into the river more likely. SWW's Drainage and Wastewater Management Plan identifies assets at most risk and programmes action to protect them. We are working to align this investment with wider catchment management measures in the Blueprint.

ENVIRONMENT AGENCY

The EA is a key partner in CtC and is already providing match-funding. There's an opportunity to apply for longer-term funding through their "Grant in Aid" programme, to help deliver the Blueprint.

Nature-based solutions ← → recover nature (at scale)

