

Nature Restoration on the Killerton Estate



National
Trust



Our aims

Conserve what
we have

Welcome everyone

Restore what
we've lost

Provide outdoor spaces

Protect our soils
and water

Connect people to
nature

Adapt to climate
change

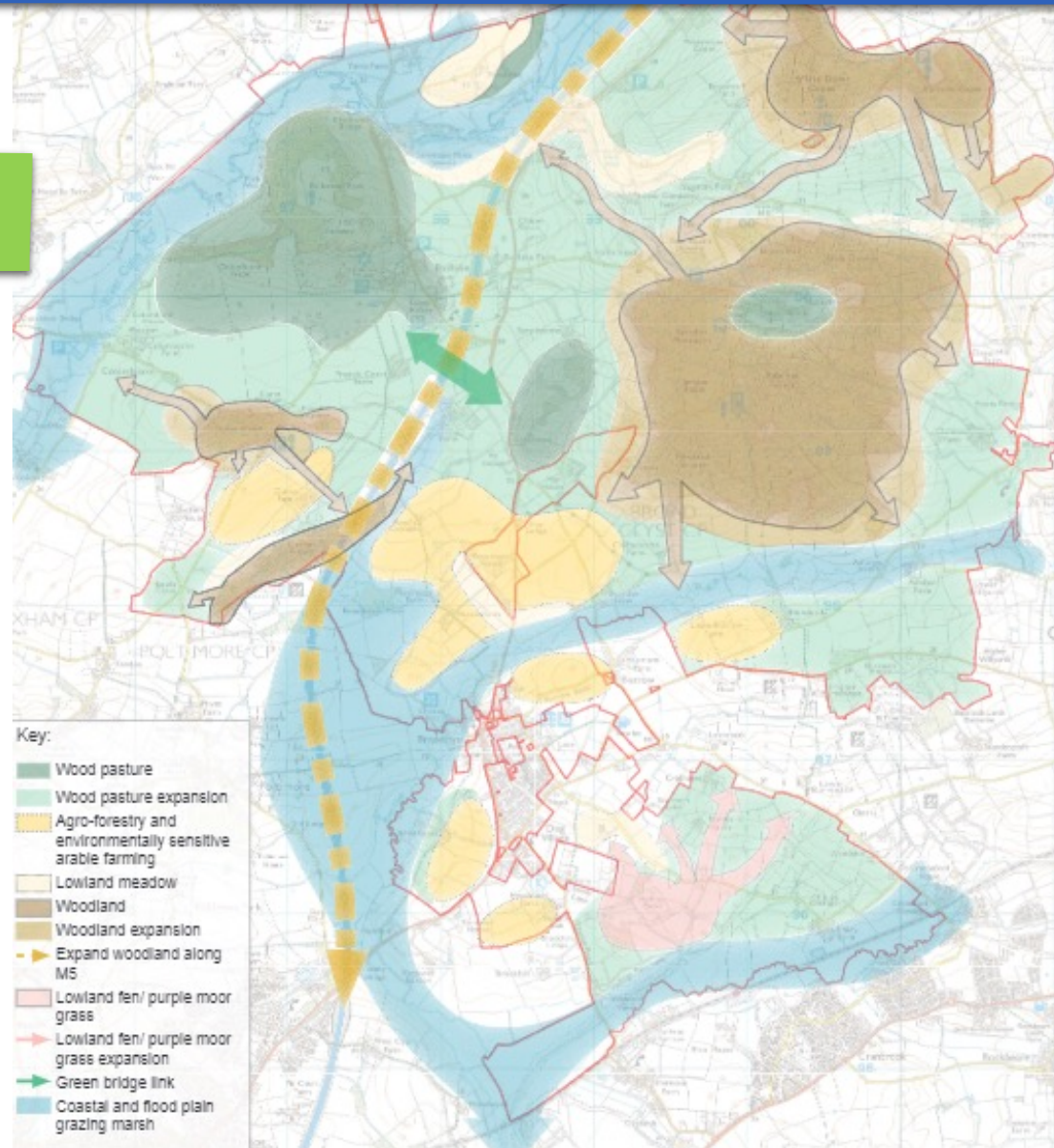
Involve our
communities

Bigger, better, more joined up

Nature based solutions

Restored habitats

Healthy soils



Low inputs

Carbon rich

Healthy water

Results since 2021

16 wetland
scrapes

18 hectares of species
rich meadows

140,000 trees

12 km of hedges

24 hectares of
woodland

40 hectares of
wood pasture

600 trees outside
woodlands

6 orchards

2km of restored
Culm floodplain





Next two years

Nature Engagement Programme

Expand wildlife and soil monitoring

Plant 2km of hedges

Create 37ha of meadows

Woodland Creation Scheme

55ha of new woodland

35ha of new woodpasture

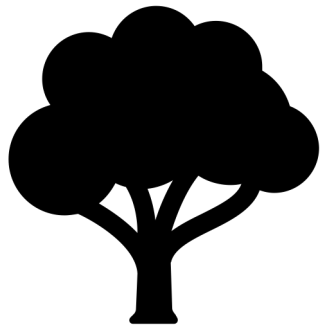
Columbjohn Farm Project

40ha parkland restoration

30ha Floodplain restoration

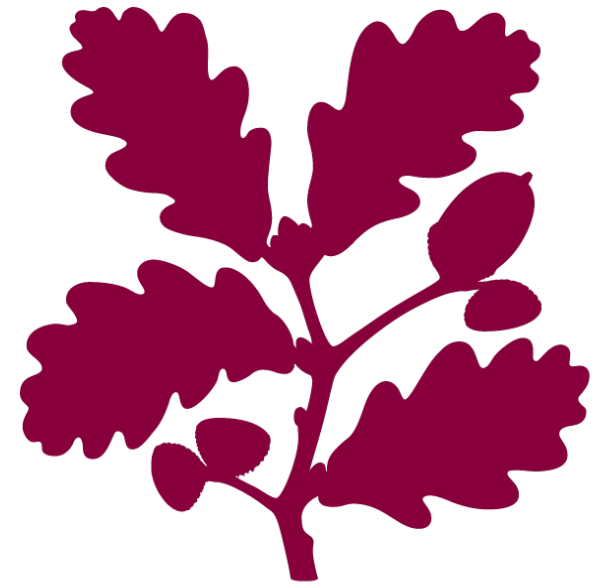
By 2030...

Priority habitat on an area the size of 800 Football pitches



Establishing 1 Million trees

Three Rivers Landscape Recovery Scheme - Killerton

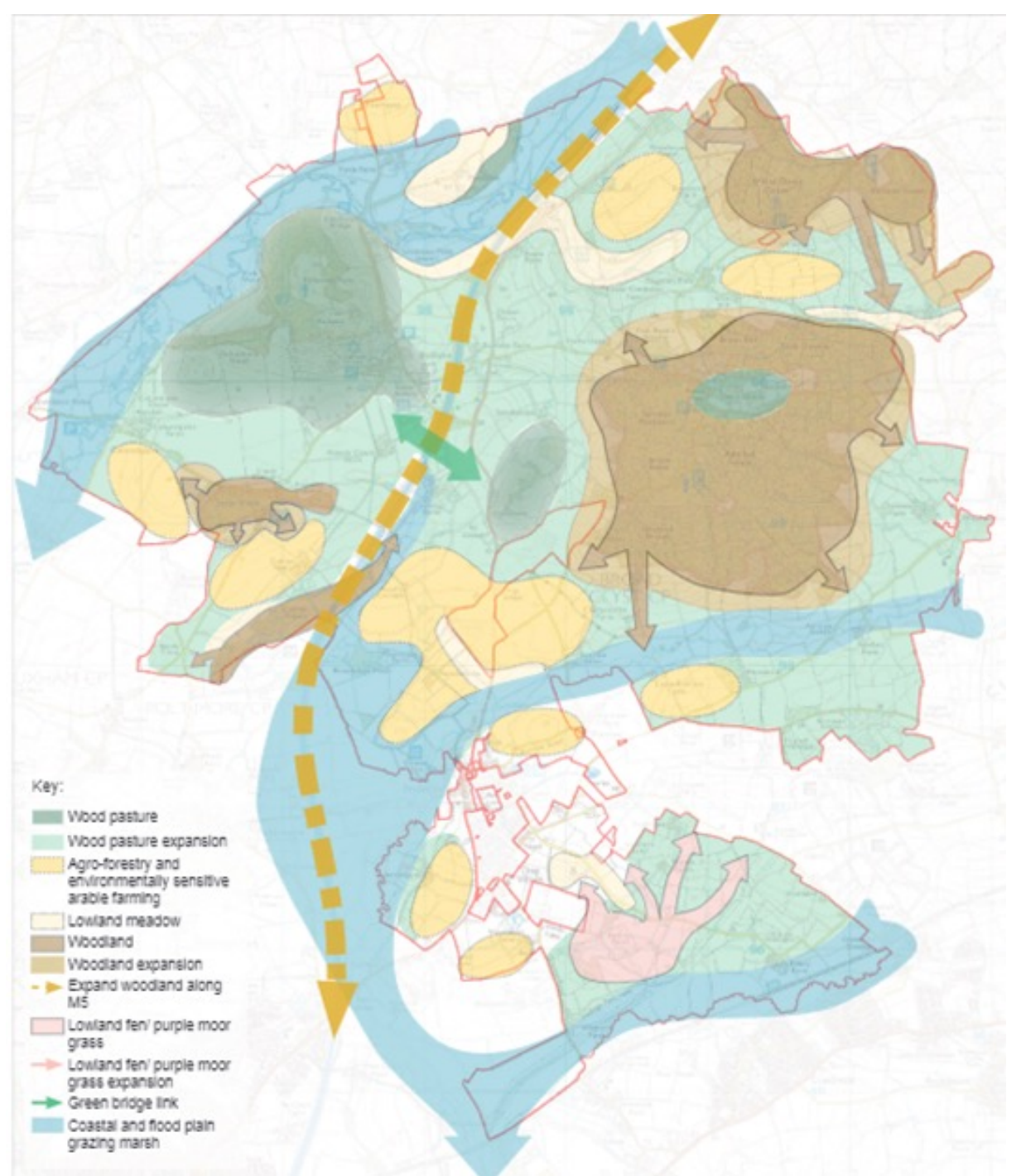


**National
Trust**

Overview

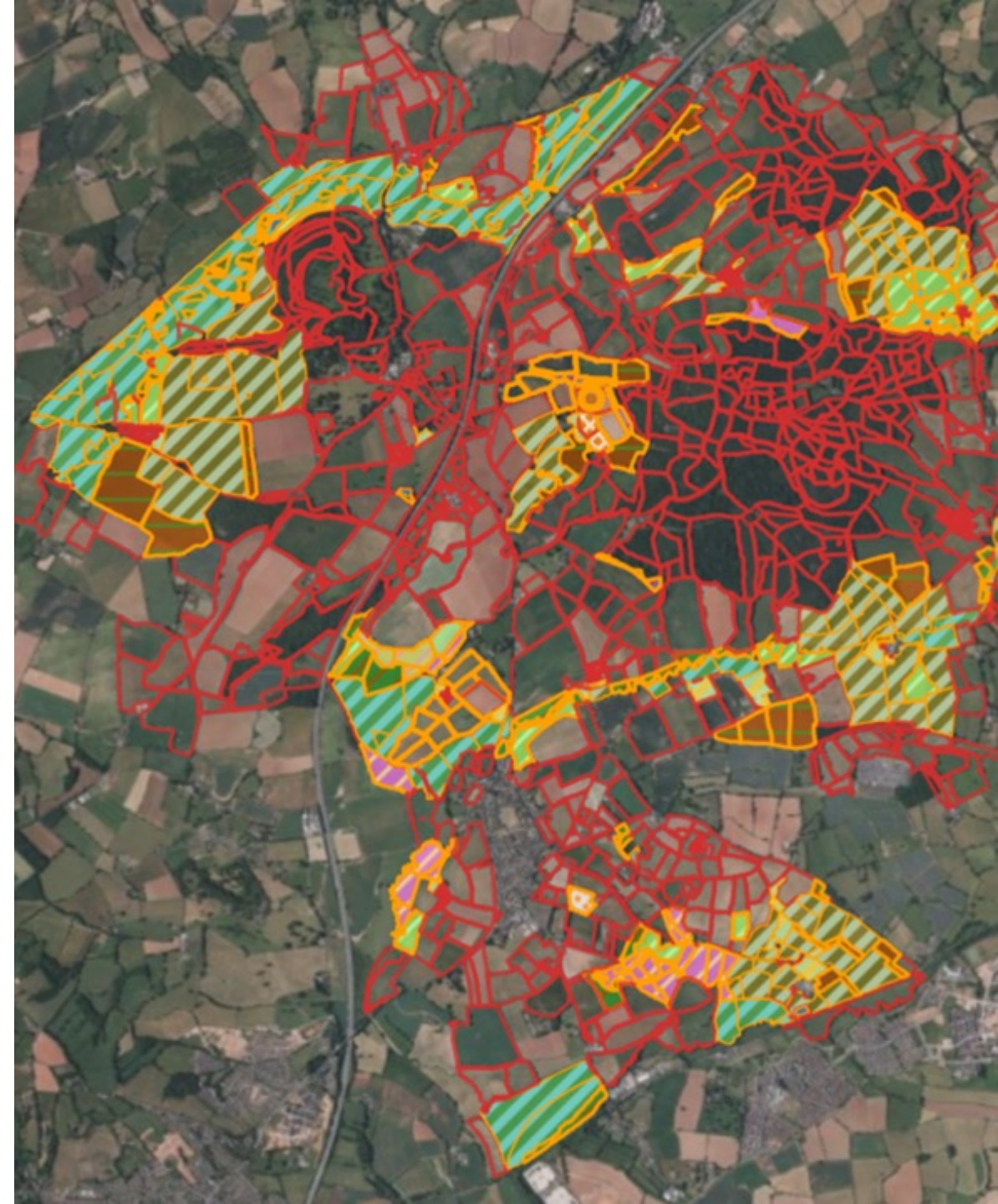
- 2-year **development phase** – April 2023 to April 2025
- **£500k grant from Defra**
- Objectives – **more nature**, and more people **connected to nature**
- Focus on 3 Rivers – **Clyst, Culm and Cranny Brook** (and thus objectives for **improving water quality** and **reducing flood risk** to property/infrastructure as well)
- If Defra approve our 6 plans, and we strike an agreement with them, we begin a **20-year delivery phase**

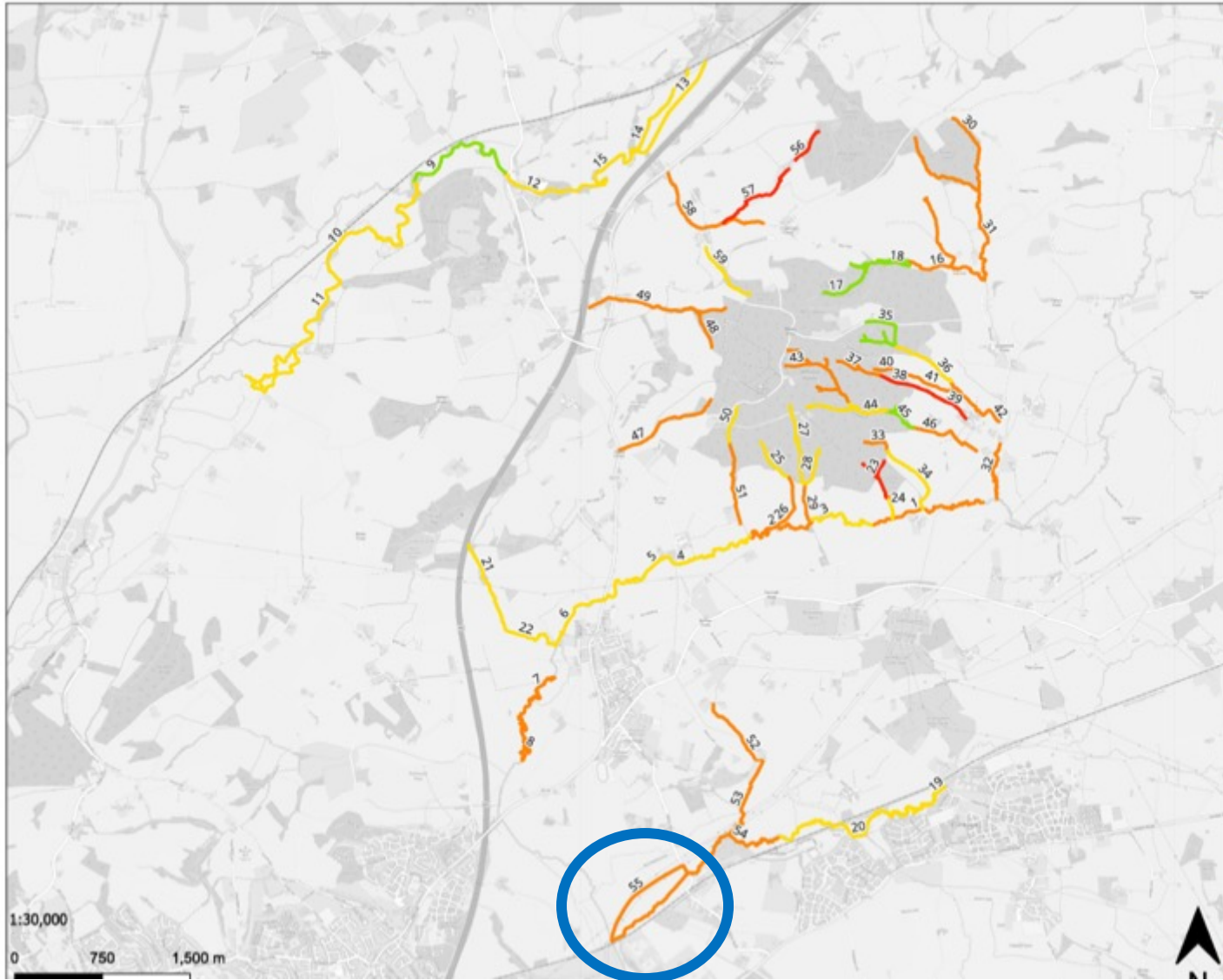




Progress with tenants

- Killerton estate 2,600 hectares
- c300 hectares 'on table' from initial meetings with 12 tenants
- Further c800 hectares of 'in hand' land





Legend

- Indicative river condition
- Fairly Good
 - Moderate
 - Fairly Poor
 - Poor

Basemap from Open Streetmap 2023

No 1-59 represent Baseline Ref No. Corresponding to Biodiversity Net Gain

1:30,000
0 750 1,500 m



Title: Kilmington River Condition Baseline
Map No: 22/4241.01-01
Date: November 2023
Drawn by: AP



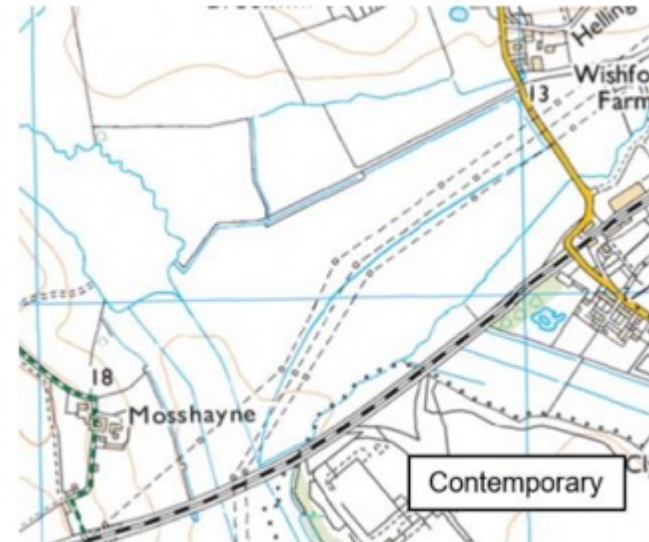
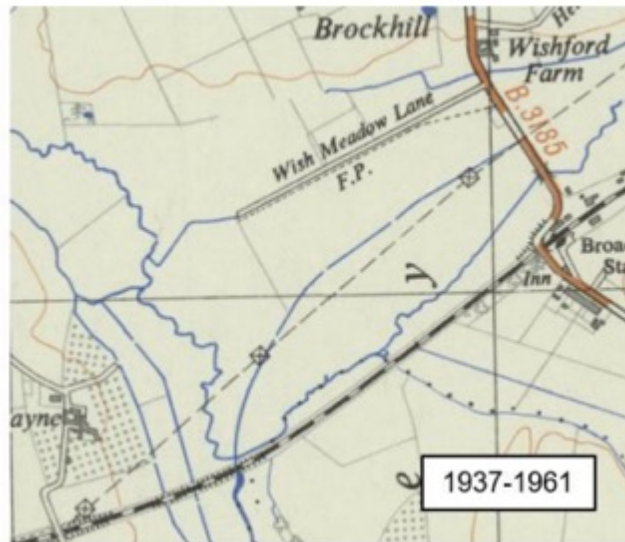
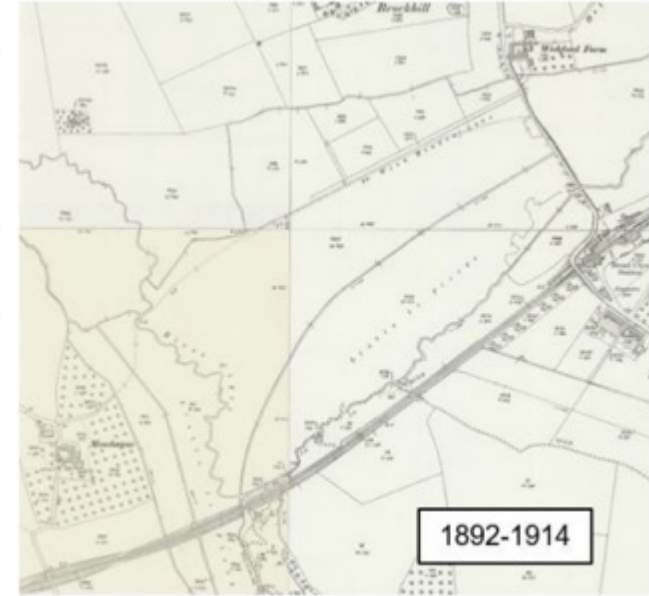
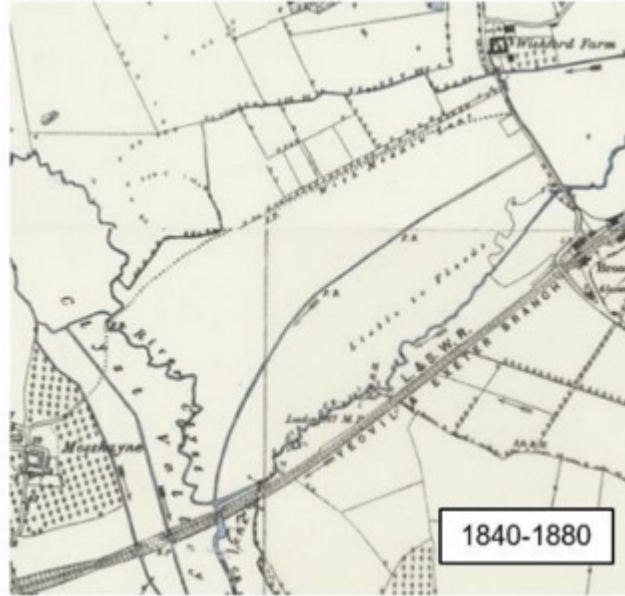
River Condition Assessment

Wish Meadow



Pre 19th century
common land & water
meadow

WarAg straightening of
Clyst



Option 1 and summer water flows

